

## 3M ESPE Temporization Solutions



A simple method  
for shine everytime.



**3M** ESPE

# 3M ESPE makes it easy to create precise provisionals with shine everytime.



**It's as simple as 1, 2, 3.**

Clinical photos courtesy of Dr. Gunnar Reich

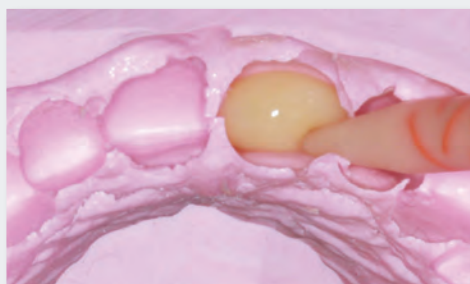
1

Take the preliminary impression using Imprint™ 4 Preliminary VPS Impression Material.



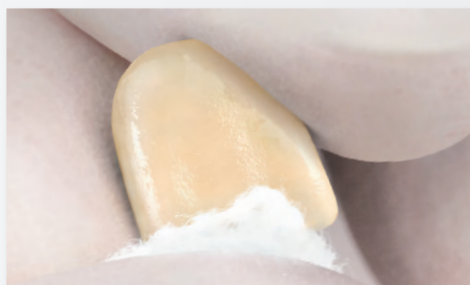
2

Fill the preliminary impression with Protemp™ Plus Temporization Material and seat in the mouth. Hold firmly in place for at least 1:40 minutes from start of mix.



3

To ensure a smooth and shiny surface, leave the material in the matrix for 5 minutes. No polishing is needed. Simply wipe with alcohol to reveal the shine.



# Pentamix™ Lite

Automatic Mixing Unit



reddot award 2014  
winner

1 When you're ready to take the preliminary impression — simply start with the press of a button.

## Start automixing and take control.

Pentamix Lite automatic mixing unit delivers a homogeneous, void-free mix in the exact quantity you need.



## Use Only the Original!

Always use 3M ESPE's Penta™ Mixing Tips in your Pentamix device to ensure proper mixing and impression results.

## Another plus: 3M™ ESPE™ Impression Tray.

With no need for a tray adhesive, the single-use 3M ESPE Impression Tray is ready to use and saves time. Simply select the proper tray size (S, M or L) and fill the tray directly from the mixing device.





# Imprint™ 4 Preliminary

VPS Preliminary Impression Material

2 No dust. No mess. Gain control with stress-free preliminary impressions. Once you try this VPS material, alginate will be a thing of the past.

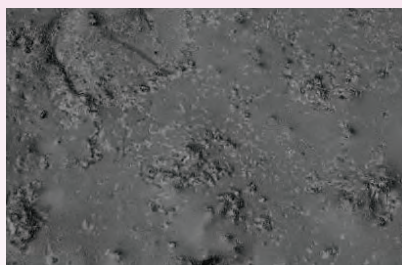


## A smooth impression makes provisionals shine.

Over 95% of dentists surveyed noticed a better surface quality of Protemp™ Plus temporary restorations when the matrix was made with Imprint 4 Preliminary VPS Material vs. an alginate material.<sup>1</sup>

Patient-pleasing mint flavor. Available in two setting versions, regular and super quick.

## Smooth impressions mean less work for you.



Alginate surface (Palgat™ Plus, 3M ESPE) shown with a Laser Scanning Microscope (objective lens with 20x magnification).



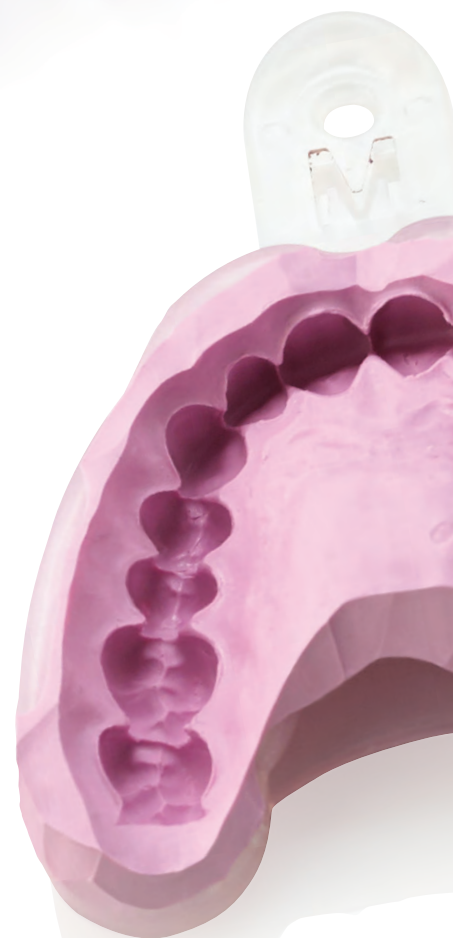
Surface of Imprint™ 4 Preliminary VPS Material shown with a Laser Scanning Microscope (objective lens with 20x magnification).

Source: 3M ESPE internal data.

## A backup for peace of mind.

Impressions show virtually no dimensional change—even after three months. This allows for easy remakes of provisionals if necessary.

<sup>1</sup> Source: Field evaluation conducted by 3M ESPE.



# Protemp™ Plus

Temporization Material

3

Get an easy shine every time when your Protemp™ Plus provisional is made with Imprint™ 4 Preliminary VPS Impression Material.



Record-breaking toughness.  
Available in six shades.

## The high-performance material for all impression-based provisionals.

You and your patients will benefit from a reliably tough temporary that looks great without any additional polishing or glaze. Simply wipe with alcohol for a natural shine.



# Ordering Information

## PENTAMIX™ LITE AUTOMATIC MIXING UNIT AND ACCESSORIES

Item No.	Product Information
77907	<b>Pentamix™ Lite Automatic Mixing Unit – 120 V/60 Hz</b> Includes: 1 Penta™ Cartridge for Pentamix™ Lite
77944	<b>1 Penta™ Cartridge for Pentamix™ Lite</b>
77949	<b>Penta™ Mixing Tips – Red</b> Includes: 50 Mixing Tips

## 3M™ ESPE™ IMPRESSION TRAY REFILLS (each containing 10 trays)

Item No.	Product Information
71615	<b>Size S, upper jaw</b>
71616	<b>Size M, upper jaw</b>
71617	<b>Size L, upper jaw</b>
71618	<b>Size S, lower jaw</b>
71619	<b>Size M, lower jaw</b>
71620	<b>Size L, lower jaw</b>

## IMPRINT™ 4 PRELIMINARY PENTA™ VPS PRELIMINARY IMPRESSION MATERIAL

Item No.	Product Information
<b>Refills</b>	
71521	<b>Imprint™ 4 Preliminary Penta™</b> Includes: 2 base pastes – 300 ml each, 2 catalysts – 60 ml each
71522	<b>Imprint™ 4 Preliminary Penta™ Super Quick</b> Includes: 2 base pastes – 300 ml each, 2 catalysts – 60 ml each
<b>Value Packs</b>	
71523	<b>Imprint™ 4 Preliminary Penta™</b> Includes: 6 base pastes – 300 ml each, 6 catalysts – 60 ml each
71524	<b>Imprint™ 4 Preliminary Penta™ Super Quick</b> Includes: 6 base pastes – 300 ml each, 6 catalysts – 60 ml each

## IMPRINT™ 4 PRELIMINARY VPS PRELIMINARY IMPRESSION MATERIAL

Item No.	Product Information
<b>Economy Packs</b>	
71539	<b>Imprint™ 4 Preliminary Regular</b> Includes: 10 – 50 ml cartridges
71540	<b>Imprint™ 4 Preliminary Super Quick</b> Includes: 10 – 50 ml cartridges
<b>Bulk Packs</b>	
71548	<b>Imprint™ 4 Preliminary Regular</b> Includes: 30 – 50 ml cartridges
71549	<b>Imprint™ 4 Preliminary Super Quick</b> Includes: 30 – 50 ml cartridges

## PROTEMP™ PLUS TEMPORIZING MATERIAL

Item No.	Product Information
46962	<b>Introductory Kit – A2</b> Includes: 1 cartridge – 50 ml, A2; 16 Garant™ Mixing Tips blue; 1 Garant™ Dispenser 10:1
<b>Refills</b>	
46964	<b>Protemp™ Plus Temporization Material – Bleach</b> Includes: 1 cartridge – 50 ml, 16 Garant™ Mixing Tips blue
46955	<b>Protemp™ Plus Temporization Material – A1</b> Includes: 1 cartridge – 50 ml, 16 Garant™ Mixing Tips blue
46963	<b>Protemp™ Plus Temporization Material – A2</b> Includes: 1 cartridge – 50 ml, 16 Garant™ Mixing Tips blue
46958	<b>Protemp™ Plus Temporization Material – A3</b> Includes: 1 cartridge – 50 ml, 16 Garant™ Mixing Tips blue
46973	<b>Protemp™ Plus Temporization Material – A3.5</b> Includes: 1 cartridge – 50 ml, 16 Garant™ Mixing Tips blue
46961	<b>Protemp™ Plus Temporization Material – B3</b> Includes: 1 cartridge – 50 ml, 16 Garant™ Mixing Tips blue

Item No.	Product Information
71453	<b>Garant™ Mixing Tips Refill — Blue</b> Includes: 50 Mixing Tips



### Dental Products

2510 Conway Avenue  
St. Paul, MN 55144-1000 USA  
1-800-634-2249

### 3M Canada

Post Office Box 5757  
London, Ontario N6A 4T1  
Canada  
1-888-363-3685

3M, ESPE, Garant, Imprint, Palgat, Penta, Pentamix and Protemp are trademarks of 3M or 3M Deutschland GmbH. Used under license in Canada. © 3M 2014. All rights reserved. Please recycle. Printed in U.S.A. 70-2013-0664-7 (Rev. B)